



Tammex Installation Services

Tammex Pty Ltd – ABN 31 137 990 722

Phone: 1300 722 341

TAMMEX
COMMERCIAL

Who is Tammex?

Tammex is a leading supplier and installer of Ergotron office and medical solutions, HP Large format printers and commercial displays to some of Australia's most recognised brands and companies of all sizes. We are a trusted supplier, designer and installer for small and large scale projects. We have a national presence allowing Tammex to coordinate projects across all Australian states and territories. We are proud to be given the opportunity to work with such well known brands and household names.

Tammex partners with companies such as Philips, HP, Ergotron, Aurora, Vogels and Atdec for logistical movement of stock throughout Australia and New Zealand. We have built strategic partnerships with our suppliers and customers giving us the competitive edge for supplying projects on time and within budget.

Tammex provides hardware and software solutions to many well known brands.

- Shaver Shop
- Adairs
- United Petroleum
- Endota Spa
- Adidas
- WA Health

What we install?

Tammex has a range of installation services available. We have installers in most cities Australia and New Zealand wide. Our installers are experts in the following.

- LED Video Wall Installation & Commissioning
- Commercial Display Video Wall Installation & Commissioning
- Commercial Display Installation
- Menu Board Installation
- Content Management Software Installation
- Ergotron Mounting Solutions
- Ergotron Medical Carts & Trolleys
- HP Large Format Printers

Installation Services

Tammex is a AV intergrator providing installation services for commercial displays and video walls. Our technicians are AV intergrators with vast expereince in commercial display installs. Our installation quote is an **indicative price** and additional cost may incur on other factors.

Quote Pricing & Inclusions

While we do our best to provide acurate pricing for all installations, factors outside of out control can effect overall cost. Our installation quote assumes there is a smooth uninterrupted flow of work which includes.

- On time site access during working hours (9am – 5pm).
- Uninterrupted work flow without interruption from other trades.
- Unrestricted access to electrical power than is needed to complete tasks.
- Access to hardware delivered to site for installation.
- Fusion software configuration & screen commisioning if power is available at time of installation.
- Free phone technical support for software supplied by Tammex.

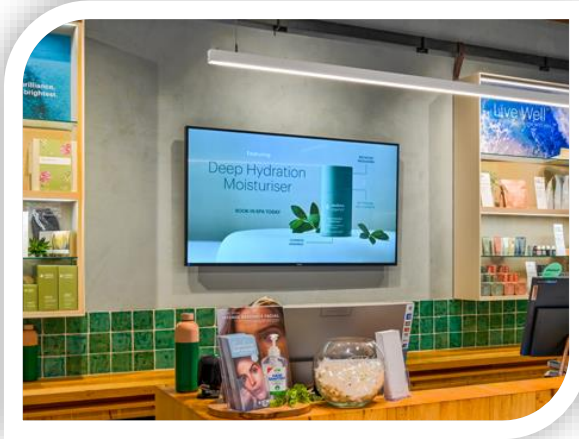
Quote Pricing & Exclusions

Tammex installers do there best to minimise cost on all installations. Additional cost will be incurred for time spent or work outside of the original scope of work.

- Additional time spent due to site access delays.
- Delays from other trades involved with the site build.
- Reinforcing of walls and ceiling spaces to support displays or videowalls.
- Shopping centre contractor inductions and paperwork preperation.
- Power cabling or data cabling.
- Rubbish removal and disposable of cardboard in compactors etc.
- Ceiling cut out and ceiling access covers. Manhole covers and access panels.
- Floor modifications to accommodate floor stand mounts.

Relevant Commercial Display Project Experience

Tammex has a vast customer base with extensive project experience with commercial display and video wall installation. Below is an example of supply and installation for large scale LED projects, shopfront digital display advertising screens and internal menu board.



Warranty & After Sales Service

Tammex partners with internationally recognized brands such as Philips, Ergotorn, Vogels, Aurora LED, Atdec and LG. While the initial installation is an important aspect of any successful project aftersales service is just as important. Our products are backed by large international companies giving our customer piece of mind knowing they have purchased quality products from leading audio visual manufacturers. All sales from Tammex Commercial include.

- 3 Year onsite commercial warranties unless otherwise stated.
- Free phone technical support for Fusion content management software.
- Free phone trouble shooting for display configuration.
- Onsite service warranties vary depending on product purchased.
- Extended warranties available upon request.

Get In Touch With Tammex

Call Tammex now for an obligation free quote for your commercial display installation.

- Phone: 1300 722 341
- Email: sales@tammex.com.au
- Web: www.tammex.com.au